

# WOODSTAR



## THE ULTIMATE WOOD FLOORCARE SYSTEM

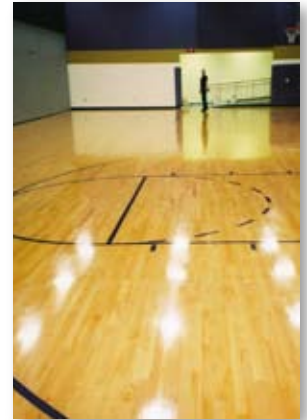


*Pioneer Eclipse*<sup>®</sup>  
MASTERS IN THE ART OF FLOORCARE

# WOODSTAR WOOD FLOORCARE SYSTEM

## One System

The WoodStar® Wood FloorCare System brings together products, equipment, and procedures designed to work in concert to create beautiful, durable, slip-resistant wood floors. From center court to the shopping mall, WoodStar is the professional's system of choice for wood floorcare worldwide!



## Five Easy-To-Use Products

**WoodPrime® Sanding Sealer** is a non-yellowing base coat specifically formulated to optimize adhesion and protect against tannin bleed.

Choose from two WoodStar Wood Floor Finishes, internally cross-linked, one-component, water-based coatings with low odor and exceptional slip resistance. Select **WoodStar Wood Floor Finish** for a clean, clear, high gloss film with or without burnishing, or **WoodStar Satin Wood Floor Finish** for a satiny, low gloss finish.

For cleaning, **Rebound® Cleaner/Enhancer** or **EnviroStar Green® Floor Maintainer** can be used daily to remove dirt and soil while enhancing the finish and renewing slip resistance. For heavily soiled areas, substitute **Eclipse® Neutral All Purpose Cleaner** or **EnviroStar Green All Purpose Neutral Cleaner** into your daily cleaning program as needed. **EnviroStar Green Dust Mop Treatment** rounds out the Wood FloorCare System by providing enhanced dust mopping effectiveness without leaving a residue.

*All EnviroStar Green products are recognized by the EPA Design for the Environment Program (DfE) for Safer Chemistry while EnviroStar Green All Purpose Neutral Cleaner is also certified by Green Seal.*

## Countless Benefits

- Water-based, no mix formula
- Non-flammable with very low VOC's
- Simple application
- Brilliant gloss
- Extreme durability
- Easy repair and maintenance
- Excellent coverage
- Economical
- Classified by UL for slip resistance



WoodStar® Satin Wood Floor Finish



WoodStar® Wood Floor Finish



WoodPrime® Wood Floor Sealer



Rebound® Cleaner/Enhancer



Eclipse® Neutral Cleaner

### EnviroStar Green Alternatives

**Floor Maintainer**  
213MP, 213FS, 213D, 213DD

**All Purpose Cleaner**  
330MP, 330FS, 330D, 330DD

**Dust Mop Treatment**  
214MP

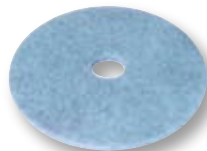


BuffStar® Electric Buffer



Gazelle® UHS Electric Burnisher

Blue Blend® UHS Burnishing Pad



SpeedStar® UHS Propane Burnisher

PowerStar® Z1 Propane Automatic Scrubber



# SIMPLICITY IN ACTION

## Application on bare wood

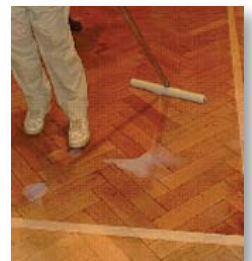
1. Lightly screen the floor to remove raised grain.
2. Dust mop, vacuum and tack to remove all dust.
3. Apply 2 coats of WoodPrime Sanding Sealer and allow to dry.
4. Screen lightly to prepare for floor finish.
5. Dust mop, vacuum and tack to remove dust.
6. Apply 2 coats of WoodStar or \*WoodStar Satin. Allow to dry between coats.



Simple Preparation

## Recoating over existing wood finishes

1. Dust mop using a mop treated with EnviroStar Green Dust Mop Treatment.
2. Screen lightly to prepare for floor finish.
3. Dust mop, vacuum and tack to remove all dust.
4. Apply 1-2 coats of WoodStar or \*WoodStar Satin. Allow to dry between coats.



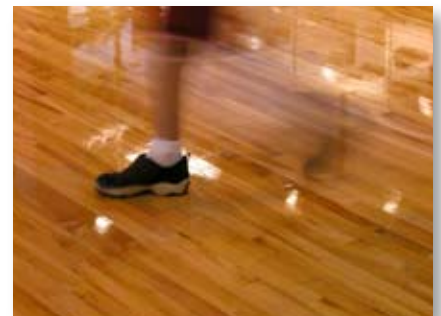
Easy to Apply

## Routine Maintenance

1. Dust mop using a mop treated with EnviroStar Green Dust Mop Treatment.
2. Clean with Rebound Cleaner/Enhancer.
3. Optionally use Eclipse Neutral Cleaner for heavily soiled areas.
4. Allow floor to dry completely.

## Optional Burnishing - WoodStar

1. Allow floor to dry completely after cleaning or recoating.
2. Burnish with an Amano Pioneer Eclipse burnisher and a Blue Blend Pad.
3. Dust mop using a mop treated with EnviroStar Green Dust Mop Treatment.



Superior Results

Note: \*WoodStar Satin is not designed to be burnished.



## BRILLIANT GLOSS



## EXCEPTIONAL PROTECTION

# WOOD FLOOR SYSTEMS COMPARISON GUIDE



	WoodStar FloorCare Systems	Oil Based Polyurethane Products	Water-based Polyurethane Products	Lacquer & Varnish
Application & Maintenance	<ul style="list-style-type: none"> <li>• One component</li> <li>• No hazardous fumes or ingredients</li> <li>• No protective respiratory equipment required</li> <li>• Excellent repairability</li> <li>• Easy maintenance</li> </ul>	<ul style="list-style-type: none"> <li>• Difficult to clean without streaking</li> <li>• Top coat is not repairable and requires frequent costly sanding</li> <li>• Contains environmentally hazardous ingredients</li> </ul>	<ul style="list-style-type: none"> <li>• Offensive odor</li> <li>• Two-component formulation</li> <li>• Difficult to apply, prone to mixing errors</li> <li>• Acceptable repairability</li> <li>• Limited pot life</li> </ul>	<ul style="list-style-type: none"> <li>• Strong, unpleasant odor that lingers for days or weeks</li> <li>• Labor intensive application</li> <li>• Very long drying times</li> <li>• Hazardous fumes during application</li> <li>• Hard to clean or repair</li> </ul>
Film Quality	<ul style="list-style-type: none"> <li>• Satin or High Gloss</li> <li>• Excellent clarity</li> <li>• No discoloration</li> </ul>	<ul style="list-style-type: none"> <li>• Acceptable gloss</li> <li>• Discolors the floor</li> </ul>	<ul style="list-style-type: none"> <li>• Acceptable gloss</li> </ul>	<ul style="list-style-type: none"> <li>• Acceptable initial appearance</li> <li>• Initial gloss wears quickly</li> <li>• Discolors the floor</li> </ul>
Durability	<ul style="list-style-type: none"> <li>• Excellent for high traffic areas</li> <li>• Protects from spills</li> </ul>	<ul style="list-style-type: none"> <li>• Acceptable</li> <li>• Protects from spills</li> </ul>	<ul style="list-style-type: none"> <li>• Acceptable</li> <li>• Separate cross-linker required for slip resistance</li> </ul>	<ul style="list-style-type: none"> <li>• Acceptable for low traffic</li> <li>• Acceptable spill protection</li> <li>• Scratches easily</li> </ul>
Tools & Equipment	<ul style="list-style-type: none"> <li>• Easy clean-up with water</li> </ul>	<ul style="list-style-type: none"> <li>• Application tools messy and difficult to clean-up</li> </ul>	<ul style="list-style-type: none"> <li>• Messy and difficult clean-up</li> </ul>	<ul style="list-style-type: none"> <li>• Rags and mops pose fire hazard when saturated</li> <li>• Messy and difficult clean-up</li> </ul>
Slip Resistance	<ul style="list-style-type: none"> <li>• UL Listed</li> </ul>	<ul style="list-style-type: none"> <li>• Acceptable</li> </ul>	<ul style="list-style-type: none"> <li>• Acceptable</li> </ul>	<ul style="list-style-type: none"> <li>• Acceptable</li> </ul>
Buffability	<ul style="list-style-type: none"> <li>• Excellent response to UHS Burnishing</li> </ul>	<ul style="list-style-type: none"> <li>• Most are not suitable</li> </ul>	<ul style="list-style-type: none"> <li>• Not suitable</li> </ul>	<ul style="list-style-type: none"> <li>• Not suitable</li> </ul>
Coverage	<ul style="list-style-type: none"> <li>• 800-1500 sq ft / gal</li> </ul>	<ul style="list-style-type: none"> <li>• 400-500 sq ft / gal</li> </ul>	<ul style="list-style-type: none"> <li>• 700-800 sq ft / gal</li> </ul>	<ul style="list-style-type: none"> <li>• 200-300 sq ft / gal</li> </ul>
Complete System	<ul style="list-style-type: none"> <li>• YES</li> </ul>	<ul style="list-style-type: none"> <li>• NO</li> </ul>	<ul style="list-style-type: none"> <li>• NO</li> </ul>	<ul style="list-style-type: none"> <li>• NO</li> </ul>
Cost	<ul style="list-style-type: none"> <li>• Economical</li> </ul>	<ul style="list-style-type: none"> <li>• Expensive</li> </ul>	<ul style="list-style-type: none"> <li>• Expensive</li> </ul>	<ul style="list-style-type: none"> <li>• Expensive</li> </ul>

Wood floors are naturally porous and susceptible to water damage.

The **WoodStar Wood FloorCare System** will help keep your wood floors in great shape for years to come.



1 Eclipse Road · PO Box 909 · Sparta, NC 28675 USA  
1-800-367-3550 · 1-336-372-8080  
www.pioneer-eclipse.com